



hoses during vulcanizing process



twisting process of warp and weft

Syntex 400

outside white plain

Construction

- inside: high-quality, very light synthetic rubber on the basis of EPDM
- outside: jacket of 100 % high tenacity synthetic polyester yarn (colour: white plain), circular-woven twill weave, warp and weft threads multiple twisted

Feature

- very light and flexible hose quality
- minimum maintenance
- extremely resistant to aging
- resistant to ozone and UV
- excellent abrasion resistance
- Cold-resistant up to -40°C
- Heat-resistant up to $+100^{\circ}\text{C}$
- minimum friction loss because of very smooth inner lining
- suitable for sea water, hot water, many chemicals

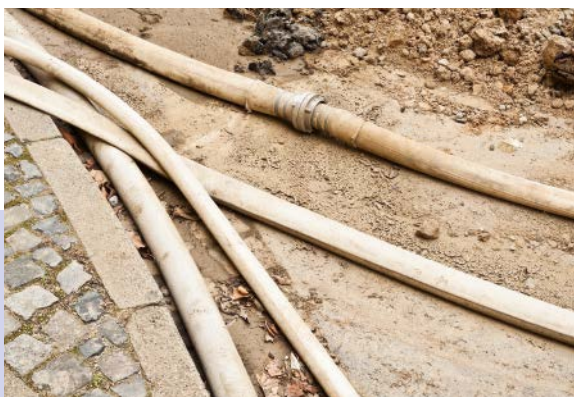


Syntex 400
(outside white plain)

Technical Details

Diameter in Inch	Diameter in mm	Bursting Pressure in bar	Bursting Pressure in PSI	Working Pressure in bar – 1:3 Safety	Working Pressure in PSI – 1:3 Safety	Working Pressure in bar – 1:4 Safety	Working Pressure in PSI – 1:4 Safety	Weight in g/m (+/-5%)	Weight in lbs/ft (+/-5%)	Wall Thickness in mm (+/-0,2 mm)	Theoretical Tensile Strength in kg
Syntex 400 (outside white plain)											
1 (Storz)	25	40	580	14	205	10	145	120	0,081	1,45	2.300
1 (Geka)	27	40	580	14	205	10	145	135	0,091	1,45	2.300
1 1/4	32	40	580	14	205	10	145	155	0,104	1,45	2.600
1 1/2	38	40	580	14	205	10	145	180	0,121	1,55	3.200
1 1/2	40	40	580	14	205	10	145	200	0,134	1,55	3.200
1 2/3	42	40	580	14	205	10	145	230	0,155	1,55	4.200
1 3/4	45	40	580	14	205	10	145	225	0,151	1,55	3.800
2	52	40	580	14	205	10	145	280	0,188	1,55	5.800
2 1/6	55	40	580	14	205	10	145	270	0,181	1,55	4.600
2 1/2	64	40	580	14	205	10	145	355	0,239	1,55	5.700
2 1/2	65	40	580	14	205	10	145	360	0,242	1,55	5.700
2 1/2	66	40	580	14	205	10	145	365	0,245	1,55	5.700
2 3/4	70	40	580	14	205	10	145	385	0,259	1,55	6.800
3	75	40	580	14	205	10	145	460	0,309	1,65	8.600
3 1/2	90	35	510	12	175	8	115	560	0,376	1,90	9.100
4	102	35	510	12	175	8	115	640	0,430	1,90	9.500
4 1/3	110	35	510	12	175	8	115	760	0,511	1,90	11.700
5	125	35	510	12	175	8	115	850	0,571	2,00	12.800
6 (Storz)	150	35	510	12	175	8	115	930	0,625	2,00	12.800
6 (Perrot)	154	35	510	12	175	8	115	940	0,632	2,00	12.800
8	205	30	435	10	145	7	100	1.050	0,705	2,003	24.500

The data regarding bursting pressure and working pressure refer only to the pure hose without couplings. Changes in technical specification without prior notice.



Applications

suitable for industry, construction, horticulture, agriculture, technical support